

SR
Electronic Torque Wrench



**CONTROL AND
TRACK TORQUE**

SR

ELECTRONIC TORQUE WRENCH

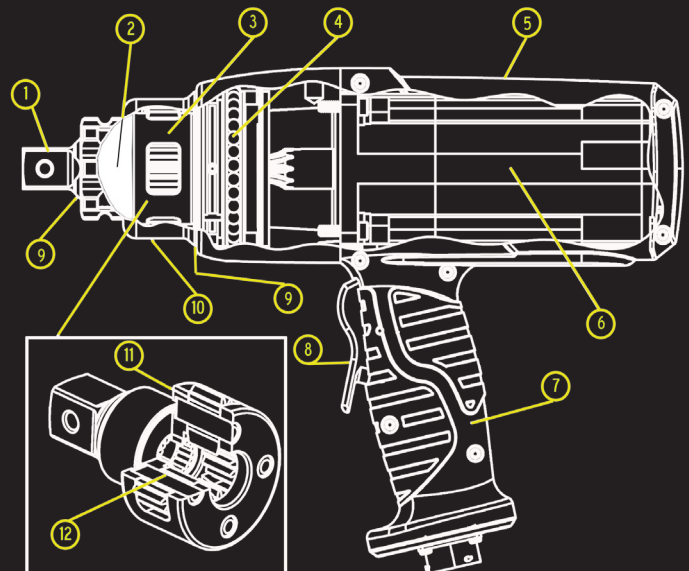
THE WRENCH WITH CONTROL

THROUGH THE USE OF INTEGRATED ENCODERS, BOTH TORQUE AND TORQUE-ANGLE CONTROL ARE AVAILABLE AT THE TOUCH OF THE SCREEN. ANGLE CONTROL IS AVAILABLE IN BOTH TIGHTEN AND LOOSEN DIRECTIONS FOR A TOTAL SOLUTION TO YOUR ENGINEERED SPECIFICATIONS. BY UTILIZING THE SAME GEAR TRAIN DESIGN AS OUR LEGENDARY RP SERIES, THE STRYK OUTPERFORMS ALL OTHER METHODS IN LONG-TERM RELIABILITY, AS WELL AS MECHANICAL REPEATABILITY. SIMPLY PUT, THIS IS THE MOST DURABLE ELECTRONIC TORQUE WRENCH SERIES EVER PRODUCED!



THE POWER INSIDE

1. HARDENED ALLOY STEEL FOR DURABILITY AND LONG CYCLE LIFE
2. BEARINGS SUPPORT THE LOADS EXPERIENCED AT THE SQUARE DRIVE
3. MULTI-STAGE PLANETARY GEAR SYSTEM WITH OPTIMIZED TOOTH DESIGN
4. SMOOTH BALL BEARING ROTATION OF THE GEARBOX HOUSING INDEPENDENT FROM THE MOTOR HANDLE
5. HANDLE HOUSING CONSTRUCTED OF DURABLE IMPACT RESISTANT NYLON THAT REMAINS COOL TO THE TOUCH
6. THE ELECTRIC-SERVO MOTOR IS EQUIPPED WITH A PRECISION ANGLE ENCODER AND IS CAPABLE OF OPERATING AT 115V OR 230V
7. ERGONOMIC HANDLE DESIGN OF THE SR SERIES DESIGNED TO ALLOW FOR A FIRM COMFORTABLE GRIP.
8. ONE FINGER TRIGGER CONTROL FOR FORWARD AND REVERSE
9. O-RINGS SEAL GREASE IN WHILE KEEPING WATER AND DIRT OUT
10. ROBUST GEARBOX
11. GEARS RUN ON LOW FRICTION. HIGH STRENGTH BEARING SLEEVES
12. TOOL STEEL PINS IN EACH GEAR STAGE CARRIER





SR-500 **SINGLE SPEED**
 TORQUE RANGE 100-500 FT/LBS
 FREE SPEED 2.6-25.8 RPM



SR-1000 **SINGLE SPEED**
 TORQUE RANGE 200-1000 FT/LBS
 FREE SPEED 2-10 RPM



SR-2000 **SINGLE SPEED**
 TORQUE RANGE 400-2000 FT/LBS
 FREE SPEED 3-6 RPM



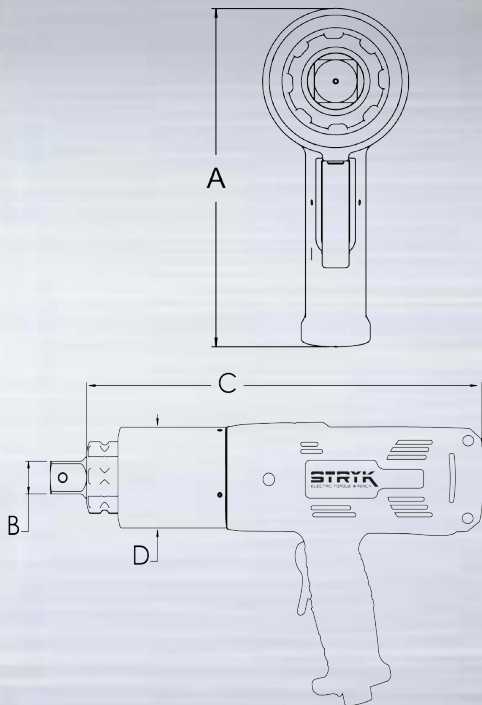
SR-3000 **SINGLE SPEED**
 TORQUE RANGE 600-3000 FT/LBS
 FREE SPEED 1.4-2.8 RPM



SR-6000 **SINGLE SPEED**
 TORQUE RANGE 1200-6000 FT/LBS
 FREE SPEED 1.9 RPM

POWER CORD IS NOT INCLUDED WITH TOOL. ORDER POWER CORD RELATIVE TO YOUR VOLTAGE REQUIREMENTS
www.appliedtorque.co.uk

POWER ENGINEERED



MODEL NUMBER	SR-500	SR-1000	SR-2000	SR-3000	SR-6000
SQUARE DRIVE	3/4"	1"	1"	1"	1 1/2"
MIN. TORQUE (ft/lbs)	100	200	400	600	1200
MAX. TORQUE (ft/lbs)	500	1000	2000	3000	6000
MIN. TORQUE (nm)	136	271	542	813	1627
MAX. TORQUE (nm)	678	1356	2712	4067	8135
HEIGHT A (in)	9.29"	9.29"	9.29"	9.31"	9.94"
HEIGHT A (mm)	236.0	236.0	236.0	236.5	252.5
SQUARE DRIVE B (in)	0.75"	1"	1"	1"	1.5"
SQUARE DRIVE B (mm)	19.05	25.4	25.4	25.4	38.1
LENGTH C (in)	11.45"	13.23"	13.94"	16.18"	16.88"
LENGTH C (mm)	290.8	336.0	354.1	411.0	428.8
DIAMETER D (in)	2.56"	2.85"	3.09"	3.75"	5.0"
DIAMETER D (mm)	65.0	72.4	78.5	95.3	127.0
WEIGHT (lbs) w/o arm	10.9	14.0	15.6	22.3	38.3
WEIGHT (kg) w/o arm	4.9	6.4	7.1	10.1	17.4
PERFORMANCE MAX (rpm)	25	10	6	3	2
CONTROL BOX (lbs/kgs)	20.0/9.07				
POWER CABLE (lbs/kgs)	1.65/.75				
DATA CABLE (lbs/kgs)	5.3/2.4				



SR SERIES
ELECTRONIC
TORQUE WRENCH

ACCURATE - A TRUE TORQUE INSTRUMENT
INDUSTRIAL - BUILT FOR EXTENDED DAILY USE
ACCOUNTABLE - FOR TORQUE / ANGLE / APPLICATION



STRYK CONTROLLER UNIT
7.5" TFT Graphic Touchscreen
20 foot encoder cable with
abrasion resistant braided
cable sleeve included. Display
Resolution: 640 x 480 Pixels
Memory - 306KB of 512KB total
Input Voltage: 100-240 VAC /
50/60 Hz
Dimensions:
Width 9" Height 12" Length 12"
Weight 12 lbs / 5.4 kg





We have always prided ourselves on the service we provide to our customers, whether it is a 1/4" socket or complex DC Multi-Spindle unit. Combining a range of the highest quality products with the support of our skilled, highly trained staff. Our motto is "if we cant support it, we wont sell it".

Applied Torque offer the full package providing Sales-Hire- On-Site Calibration-In House Calibration-Service-Repair-Design & Manufacture.

To know more of what we do, visit us at;
Applied Torque Systems Ltd
Unit S, Trecenydd Industrial Estate, Caerphilly, CF83 2RZ

Call us on:
02920 888883

Email us:
sales@appliedtorque.co.uk

Or visit our website:
www.appliedtorque.co.uk