

# PA-Series, Turbo II Air Hydraulic Pumps

▼ Shown left to right: PAMG-1402N, PATG-1102N, PARG-1102N, PATG-1105N



- High efficiency cast aluminum air motor for increased life and reduced air consumption
- Fully serviceable air motor assembly
- Reinforced heavy-duty reservoir for applications in tough environments
- New generation air-saver piston with rugged one-piece design reduces air consumption and operating costs
- Return-to-tank port for use in remote valve applications
- Quiet – only 76 dBA with low air consumption of 12 scfm
- Operating air pressure: 40-125 psi, enables pump to start at extremely low pressure
- Internal pressure-relief valve provides overload protection

▼ Easily operated by hand or by foot.



## Compact Air Over Hydraulic



### RFL-102 Regulator-Filter-Lubricator

Recommended for use with all air pumps. Provides clean, lubricated air and allows

for air pressure adjustment. Steel bowl guards are standard.

Order model number <sup>1)</sup>

**RFL102**



### Large Reservoir Models

The Turbo II Air Pump is also available with a larger reservoir: **PATG-1105N**, **PAMG-1405N**, and **PARG-1105N**.



### Hoses

Enerpac offers a complete line of high-quality hydraulic hoses. To ensure the integrity of your system, specify only genuine Enerpac hydraulic hoses.

Page: 132

| Used with Cylinder | Usable Oil Capacity<br>(in <sup>3</sup> ) | Model Number |
|--------------------|---|--------------|
| Single-acting      | 127                                       | PATG-1102N*  |
|                    | 230                                       | PATG-1105N   |
|                    | 127                                       | PARG-1102N   |
|                    | 230                                       | PARG-1105N   |
| Double-acting      | 127                                       | PAMG-1402N   |
|                    | 230                                       | PAMG-1405N   |

\* Available as set. See note on next page.

# Turbo II Air Hydraulic Pumps

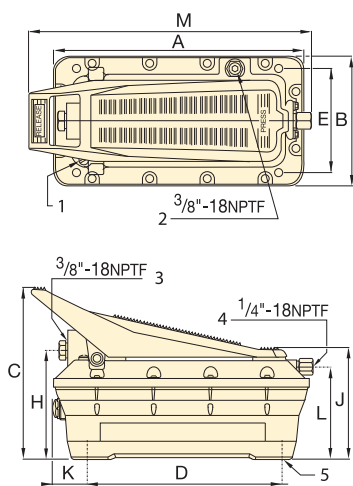
## PATG PARG PAMG Series



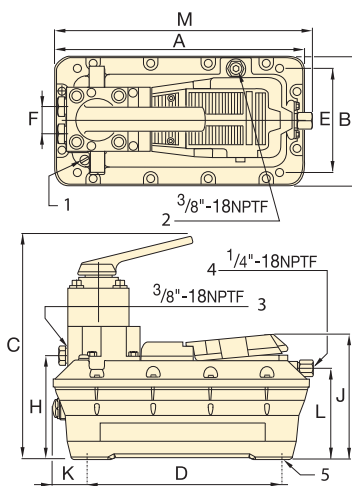
Reservoir Capacity:  
**150-305 in<sup>3</sup>**

Flow at Rated Pressure:  
**5-10 in<sup>3</sup>/min.**

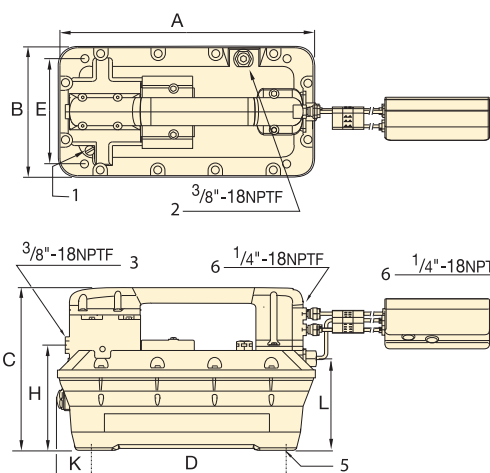
Maximum Operating Pressure:  
**10,000 psi**



**PATG-1102N and PATG-1105N**



**PAMG-1402N and PAMG-1405N**



**PARG-1102N and PARG-1105N**

- ① Filtered "Permanent" Tank Vent
- ② Return-to-Tank/Auxiliary Vent/Fill Tank Port
- ③ Hydraulic Output
- ④ Swivel Air Input with Filter
- ⑤ 4 Mounting Holes for #10 thread forming screw. Max. depth into reservoir = .75"
- ⑥ Air Input Options



The PATG-models use a foot or hand-operated treadle to control air and valve functions.

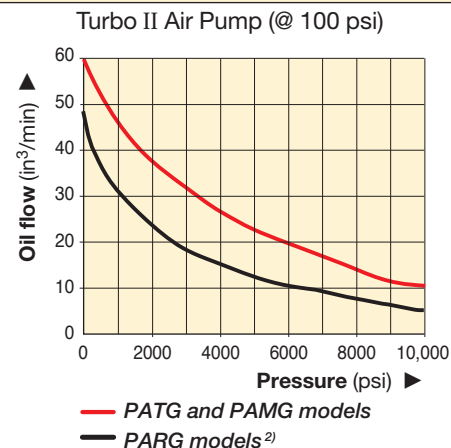
The PAMG-models use a treadle with a locking feature and a 4-way manual valve.

The PARG-models use a 15-ft. pendant hose for convenient one-man operation.

| Pressure Rating<br>(psi) | Output Flow Rate<br>(in <sup>3</sup> /min) |                 | Model Number        | Valve Function               | Air Pressure Range<br>(psi) | Air Consumption<br>(scfm) | Sound Level<br>(dBA) |
|--------------------------|--|-----------------|---------------------|------------------------------|-----------------------------|---------------------------|----------------------|
|                          | No load                                    | Load            |                     |                              |                             |                           |                      |
| 10,000                   | 60   | 10              | PATG & PAMG<br>PARG | Advance/<br>Hold/<br>Retract | 40-125                      | 12                        | 76                   |
| 10,000                   | 51 <sup>1)</sup>                           | 6 <sup>1)</sup> |                     |                              | 40-125                      | 12                        | 76                   |
| 10,000                   | 48 <sup>2)</sup>                           | 5 <sup>2)</sup> |                     |                              | 40-125                      | 8                         | 76                   |

<sup>1)</sup> Air supply connected at pendant. <sup>2)</sup> Air supply connected at pump shown on flow curve.

### OIL FLOW vs. PRESSURE



| Dimensions |      |       |      |      |      |      |      |      |      |       | Weight<br>(lbs) | Model Number |
|------------|------|-------|------|------|------|------|------|------|------|-------|-----------------|--------------|
| A          | B    | C     | D    | E    | F    | H    | J    | K    | L    | M     |                 |              |
| 12.33      | 6.49 | 8.29  | 9.04 | 4.00 | —    | 5.15 | 5.75 | 1.65 | 4.43 | 13.62 | 18              | PATG-1102N*  |
| 15.60      | 7.92 | 8.22  | 9.04 | 4.00 | —    | 5.08 | 5.75 | 3.28 | 4.41 | 17.20 | 22              | PATG-1105N   |
| 12.33      | 6.49 | 7.88  | 9.04 | 4.00 | —    | 5.15 | —    | 1.65 | 4.43 | —     | 22              | PARG-1102N   |
| 15.60      | 7.92 | 7.88  | 9.04 | 4.00 | —    | 5.08 | —    | 3.28 | 4.41 | —     | 26              | PARG-1105N   |
| 12.33      | 6.49 | 10.50 | 9.04 | 4.00 | 1.42 | 5.23 | 6.00 | 1.65 | 4.43 | 12.60 | 24              | PAMG-1402N   |
| 15.60      | 7.92 | 10.50 | 9.04 | 4.00 | 1.42 | 5.19 | 6.00 | 3.28 | 4.41 | 15.94 | 28              | PAMG-1405N   |