

Ultra-Flat Cylinders with Stop Ring

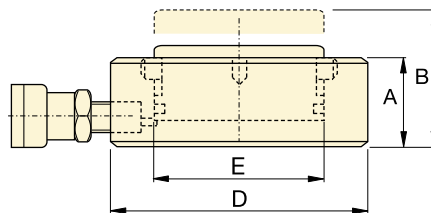
ENERPAC
POWERFUL SOLUTIONS. GLOBAL FORCE.


**APPLIED
TORQUE**
.co.uk

▼ CULP50 Ultra-Flat Cylinder, with Stop Ring



- Up to 4% side load of maximum capacity
- Stop ring for maximum stroke limitation
- Extremely low collapsed height
- Nitrocarburized surface treatment for harsh conditions.

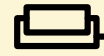


Cylinder Capacity @ 700 bar ton (kN)	Stroke (mm)	Model Number	Cylinder Effective Area (cm ²)	Oil Capacity (cm ³)	Collapsed Height A (mm)	Extended Height B (mm)	Outside Diam. D (mm)	Cylinder Bore Diam. E (mm)	 (kg)
10 (97)	6	CULP10 ¹⁾	13,9	8,3	27,5	33,5	72	42	1,0
20 (198)	6	CULP20 ¹⁾	28,3	17,0	32,0	38,0	90	60	1,7
30 (310)	6	CULP30 ¹⁾	44,2	26,5	35,0	41,0	105	75	2,5
50 (550)	6	CULP50 ¹⁾	78,5	47,1	44,5	50,5	140	100	5,4
100 (1078)	6	CULP100 ²⁾	153,9	92,5	65,0	71,0	195	140	11,5

¹⁾ Coupler AR630 including dustcap: use HB7206 hose including AH630 coupler to connect to your pump.

²⁾ Coupler CR400 including dustcap: use HC-Series hose including CH604 coupler to connect to your pump.

CULP Series



Capacity:

10 - 100 ton

Stroke:

6 mm

Maximum Operating Pressure:

700 bar

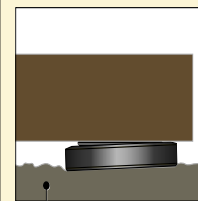


IMPORTANT!

All Ultra-Flat Cylinders require a solid lifting surface for correct support. The use of these flat cylinders on surfaces such as sand, mud or dirt, may result in cylinder damage.



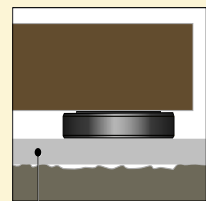
INCORRECT!



Rough soil



CORRECT!



Flat lifting surface

For more safety instructions see our 'Yellow Pages'.

Page: **264**



Hoses

Enerpac offers a complete line of high quality hydraulic hoses. To ensure the integrity of your system, specify only Enerpac

hydraulic hoses.

Page: **122**

- ▼ The Ultra-Flat cylinders are designed for applications where high lifting forces are required in confined spaces starting at 2,8 cm.

