

## Torcotronic Digital Torque Wrench with Angle

Torque range from 10 to 350 N.m

Torcotronic Digital Torque Wrenches provide highly accurate and controlled bi-directional tightening, suitable for Production, Quality Auditing, Research & Development, and Maintenance and Repair applications. These microprocessor-controlled tools have

built-in memory which stores data for download to analysis software. A comprehensive range of accessories ensures that these robust, versatile precision assembly tools provide accuracy across a wide range of applications.

### INDUSTRY SECTORS

Maintenance & Repair



Quality Control



Packaging



### Robust, versatile tightening - plus data collection and auditing capability

**Accuracy.** Exceptionally high levels of accuracy of +/-1% of reading between 10% and 100% of full scale

**Bi-directional tightening.** Supplied with reversible ratchet as standard

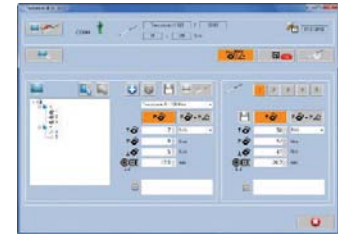
**Control.** High levels of accuracy give confidence that the tightening process is under control, hence also controlling rework and warranty costs with the added benefit of five programmable preset values

**Data collection.** The built-in memory can store 2,000 data points ready for download to analysis software. This also makes the tools faster and easier to use

**Long tool life.** High quality construction and robust design

**Process traceability.** Historic data storage and management features of easy to use PC software, available in 11 languages

**Versatility.** Tools integrate with 9x12 and 14x18 wrench fittings. Torque and angle capability ensures suitability for a broad range of applications across Production, Quality Auditing, Research & Development, and Maintenance and Repair



Software supplied as standard



Torcotronic 350 with Angle

For Further Information on any of these Products Please

Email [sales@appliedtorque.co.uk](mailto:sales@appliedtorque.co.uk)

Want to know how to use this tool?



Watch our video

Order Code	Model	Calibrated Range		Drive	Adaptors	k mm	kg	Accuracy	ISO 6789 Class
		ISO	Imperial						
021640	120	10-120 N.m	7-88 lbfft	1/2"	1/2"	565	1.01	+/- 1%	1C
021650	350	70-350 N.m	51-258 lbfft	1/2"	3/8"	701	1.18	+/- 1%	1C