

Vertical Lifting Wedge



▼ Shown: LW-16 with SB-2 and optional LWB-1



LW Series

Minimum Clearance:

.39 inches

Maximum Lift Height:

2.02*-2.72* inches

Maximum Force:

16 tons

Maximum Operating Pressure:

10,000 psi



Best Match Manual Pump

To power your Enerpac Lifting Wedge, The Enerpac **P-392** Hand Pump or **P-392FP** Foot Pump is an ideal choice.

Page: 192



Split-Flow Manifolds

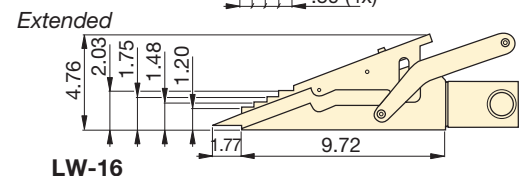
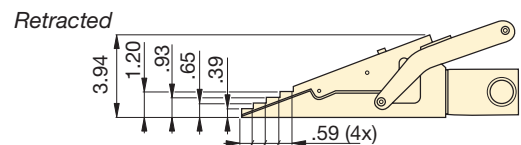
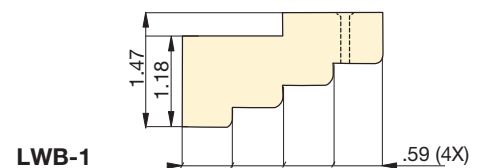
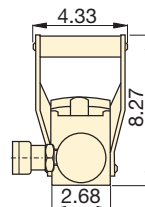
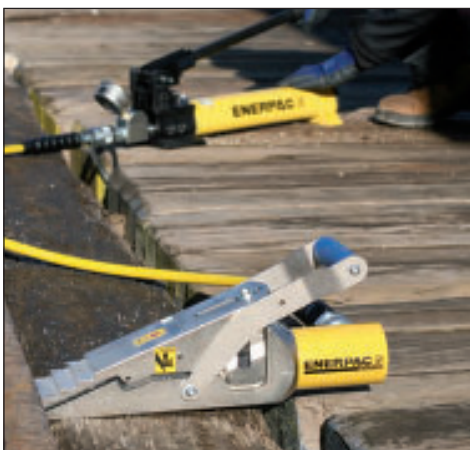
Split Flow Valves to control two or four lifting wedges simultaneously.

AM-21 with 3 ports 3/8" NPTF.
AM-41 with 5 ports 3/8" NPTF.

Page: 136

- Requires .39 inch access gap
- Lifting force 16 ton at 10,000 psi hydraulic pressure
- Automatic mechanical retraction (single acting)
- Securely raises or lowers 16 tons with no slippage
- Lifting wedge LW-16 includes safety block SB-2
- Use in tandem to lift 32 tons, or 64 tons
- .83 inch of vertical lift from each step (maximum lift to 2.72 inches with optional LWB-1 stepped block)

▼ For lifting heavy equipment with minimum floor clearance the LW-16 is the ideal tool.



Max. Lifting Force (ton)	Model No.	Minimum Clearance Gap (in)	Max. Lift per Stage (in)	Max. Lifting Height (in)	Max. Lifting Height Using Stepped Block (in)	Oil Capacity (in ³)	Weight (lbs)
16	LW-16	.39	.83	2.02	2.72	4.75	15.4

* Use optional stepped block LWB-1 to increase wedge lifting height 1.18 inches.